

Artwork/Dates

MAGAZINE DATES - 4 ISSUES PER YEAR

BWCmagazine is available in print and online.

Magazine date:

Quarter 1 - February - April

Quarter 2 - May - July

Quarter 3- August - October

Quarter 4 - November - January

Copy deadline dates:

January 20th 2023

April 21st 2023

24th August 2023

20th October 2023

SIZE QUOTED AS WIDTH AND HEIGHT

FULL PAGE

210MM X 297MM

HALF PAGE (LANDSCAPE)

210MM X 148.5MM

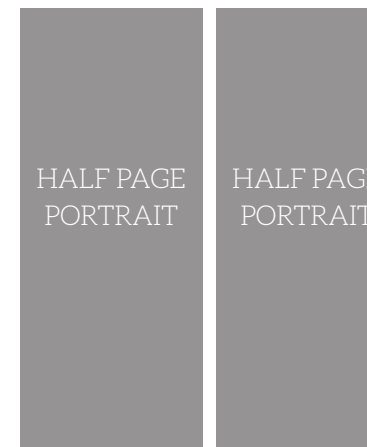
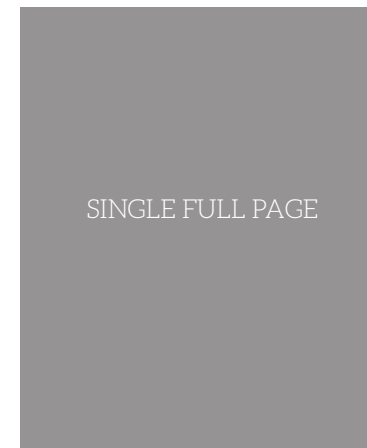
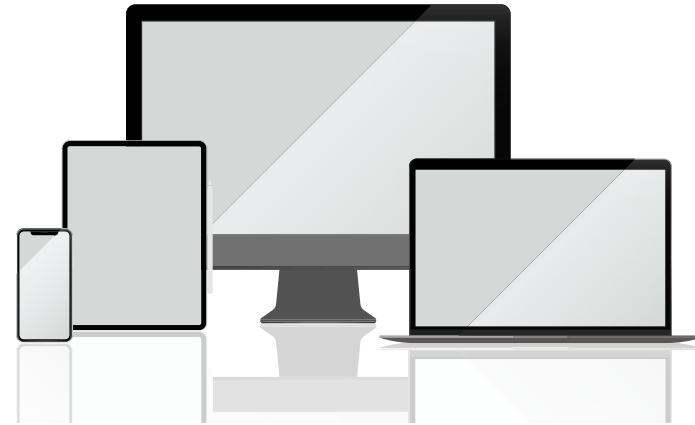
HALF PAGE (PORTRAIT)

105MM X 297MM

QUARTER PAGE

105MM X 148.5MM

3MM BLEED REQUIRED ON ALL ADVERTS. PLEASE KEEP TEXT AT LEAST 12MM FROM ALL INNER EDGES.



DOUBLE PAGE SPREAD



Flat Plan

